



A R C H I T R A V E™ - S T Y L E
K E Y P A D S

Architrave™-Style Keypads allow you to incorporate the functions of standard size HomeWorks Interactive Keypads into a sleek, narrow-profile control that fits flush in a door trim, door jamb or custom cabinetry. Architrave-Style Keypads can also be used at standard switch locations throughout your home to add a unique and elegant look to your home.

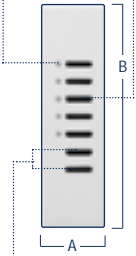
Each button on an Architrave-Style Keypad may be programmed to control an individual lighting zone, any group of lighting zones, or a lighting scene for your entire home and landscape. Like all HomeWorks Interactive Keypads, Architrave-Style Keypads may be customized to provide one-touch control of other systems in your home as well.

Architrave-Style Keypads can be custom-engraved, below each button, with names of your choosing at no additional cost.

DESIGN NOTES:



ARCHITRAVE - STYLE KEYPADS

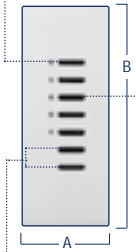


All on/All off

HWI-KP5-DN

A = 1.33" (34mm)

B = 4.50" (114mm)



All on/All off

HWI-KP5-DW

A = 1.80" (46mm)

B = 4.50" (114mm)

FEATURES

- Each button on a Keypad may be programmed to perform any one of many different functions, including
 - turning individual scenes/zones on or off
 - turning selected scenes/zones on or off as a group
 - raising or lowering selected scenes/zones as a group
- Small LEDs beside each button show the status of the scene or lighting zone programmed to that button
- Architrave-Style Keypads feature two buttons without LEDs, typically used as all on and all off function buttons

NOTE: Lutron recommends that Keypads be mounted close to eye level (between 52" and 60" high)

MODEL

NUMBER OF BUTTONS

HWI-KP5-DN

Five with LEDs, plus two without LEDs

HWI-KP5-DW

Five with LEDs, plus two without LEDs

ARCHITRAVE - STYLE KEYPAD COLORS



STANDARD METAL FINISHES:

White Matte with White Buttons, Bright Brass with Black Buttons

SPECIAL ORDER MATTE COLORS WITH WHITE BUTTONS:

Beige, Ivory, Gray, Taupe

SPECIAL ORDER MATTE COLORS WITH BLACK BUTTONS:

Brown, Black

SPECIAL ORDER FINISHES WITH BLACK BUTTONS:

Antique Brass, Satin Brass, Bright Chrome, Satin Chrome, Bright Nickel, Satin Nickel, Antique Bronze

Custom colors also available to match paint, wallcoverings, etc.

For more detailed technical information on these and other HomeWorks Interactive components, please consult the HomeWorks Interactive Technical Reference Guide.

©Lutron Electronics Co., Inc.
7200 Suter Road, Coopersburg PA 18036
Printed in U.S.A. 9/00 P/N 366-893

 **LUTRON**[®]
www.lutron.com